

**Henderson Chamber of Commerce**  
**1040 N Main St.**  
**PO Box 225**  
**Henderson, NE 68371**

Entry #

Please give a brief description of your entry. This description will be read by the parade announcer as you pass by the announcer's stand: Print please clearly or email you description to [hchamber@mainstaycomm.net](mailto:hchamber@mainstaycomm.net), type **PARADE ENTRY DESCRIPTION** in the subject line.

---

---

---

---

---

---

---

---

### PARADE ENTRY FORM

**When:** Saturday, July 13, 2013 at 10:30 am. Lineup begins at 9:30 am at Kurt Goertzen's Seed Corn Building south of town. Kiddie Parade entries will line up at the fire barn.

**Theme:** Cruising to Community Days  
*It is recommended that floats correspond with theme.*

Organization: \_\_\_\_\_

Contact person: \_\_\_\_\_

Address: \_\_\_\_\_

City: \_\_\_\_\_ State: \_\_\_\_\_ Zip: \_\_\_\_\_ Telephone #: \_\_\_\_\_

Email: \_\_\_\_\_

Size of entry: \_\_\_\_\_ Car \_\_\_\_\_ Bicycle \_\_\_\_\_ Motorcycle \_\_\_\_\_ Fire Truck(s) \_\_\_\_\_ Tractor

\_\_\_\_\_ Truck with Trailer \_\_\_\_\_ Tractor with Trailer \_\_\_\_\_ Semi \_\_\_\_\_ Other: \_\_\_\_\_

Will your entry be playing music? \_\_\_\_\_ Yes \_\_\_\_\_ No

Equestrian Units: Number of Animals in Unit: \_\_\_\_\_ Is there a wagon? \_\_\_\_\_ Yes \_\_\_\_\_ No

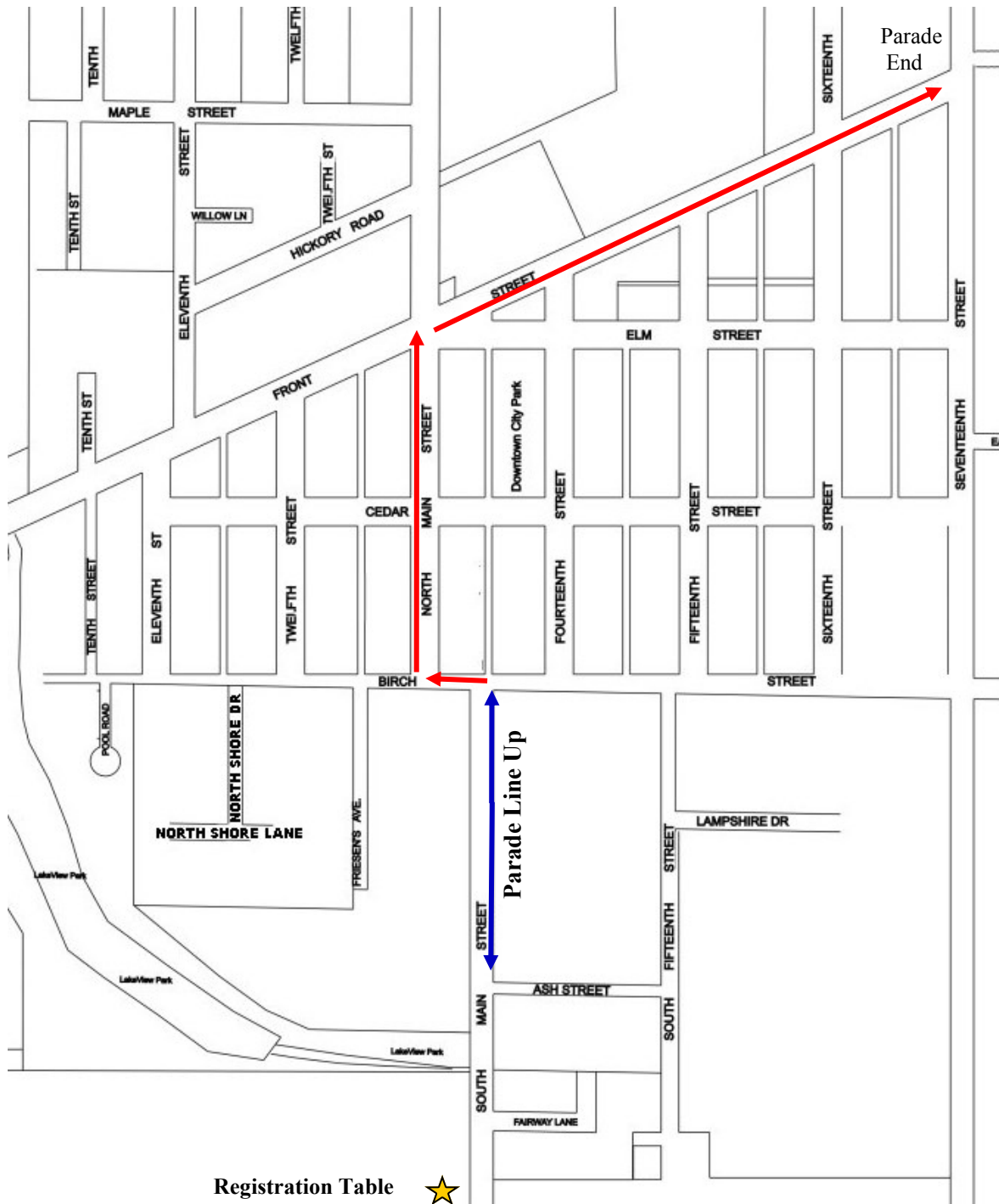
Will you provide clean-up? \_\_\_\_\_ Yes \_\_\_\_\_ No Is this a Kiddie's Parade entry? \_\_\_\_\_ Yes \_\_\_\_\_ No

APPLICATION MUST BE POSTMARKED, FAX OR DELIVERED TO THE CHAMBER OF COMMERCE, BY 5:00 p.m. July 8, 2013 to be lined up towards the front of parade. Entries without Pre Registration will be lined up at the end of parade. We reserve the right to reject inappropriate entries.

**Email:** [hchamber@mainstaycomm.net](mailto:hchamber@mainstaycomm.net)  
**Hand Delivered:** City Hall, 1044 N Main St, Henderson, NE  
**Mail:** Henderson Chamber of Commerce, PO Box 225. Henderson, NE 68371  
**Fax:** (402) 723-5785

# 2013 Henderson Community Days Parade Route

Passing through Main Street at 10:30 a.m.



## PARADE INSTRUCTIONS

1. Check in at the registration table, to get entry number.
2. Line up along South Main Street with #1 at the corner of Birch & South Main Street.
3. Route will begin at the Fire Barn.
4. Once you have followed the parade route you may exit the parade route by way of 17th Street or 18th Street.
5. Kiddie Parade, get entry number at the registration table and begin line up at the Fire Barn. The Kiddie parade will only go down Main Street.